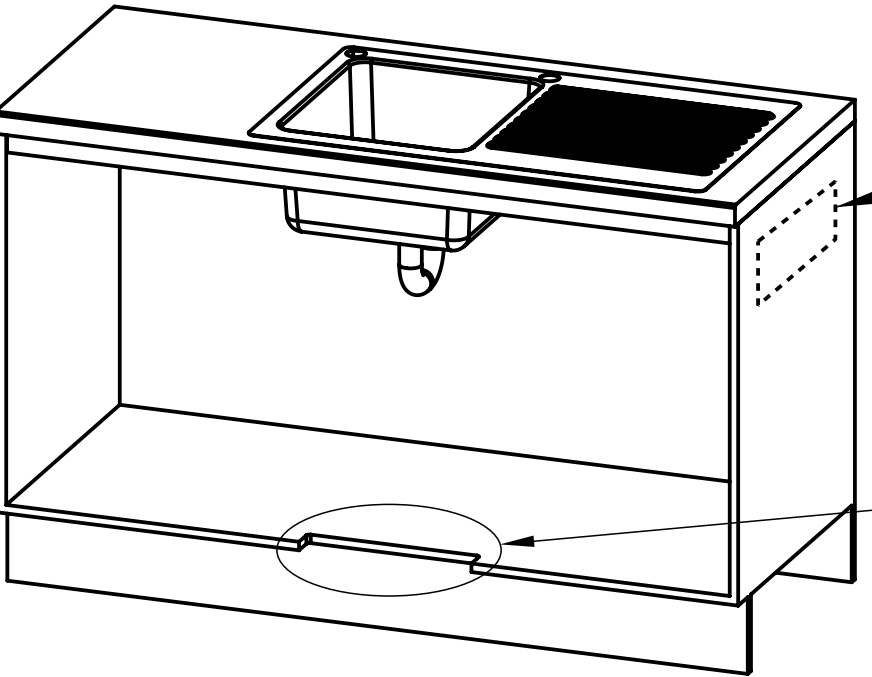
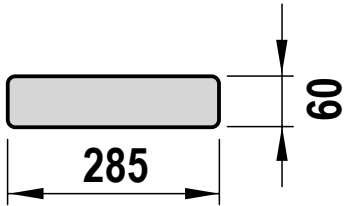


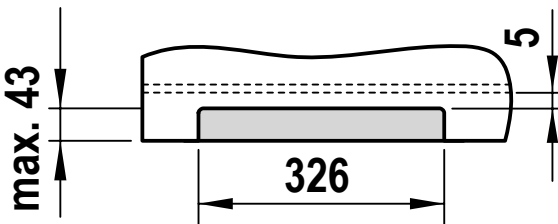
Ventilation Detail



Air outlet louvre (if required)
Cut-out in door/wall, towards
the top of the cabinet

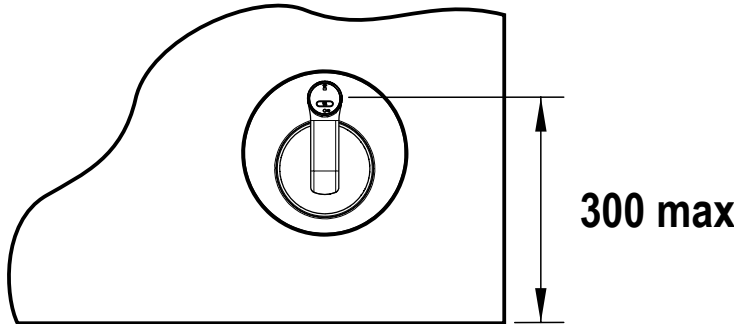


Air inlet cut-out (required)
Cut-out in cabinet floor

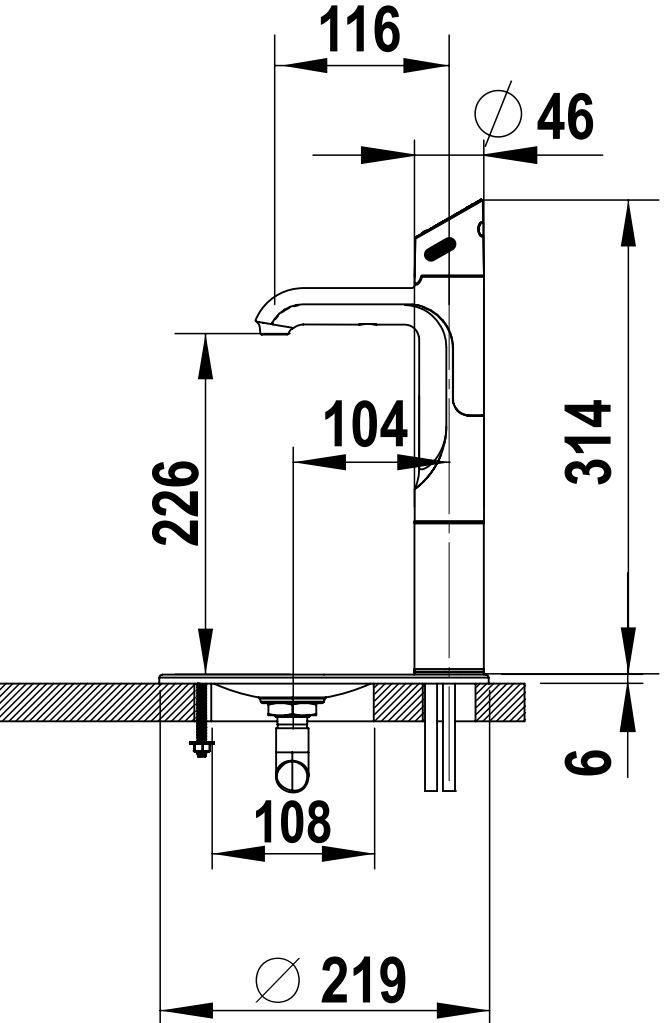


Tap Positioning

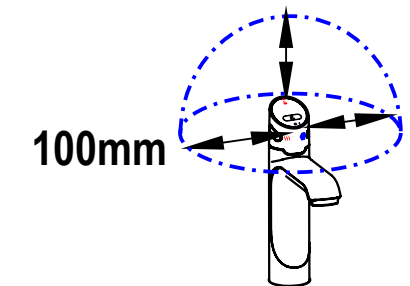
Install tap within 300mm of the benchtop edge to meet
DDA accessibility requirements.
Font installation is preferred.
For Sink installations, install on the left-hand side of the
Sink for ease of access to Boiling water function.



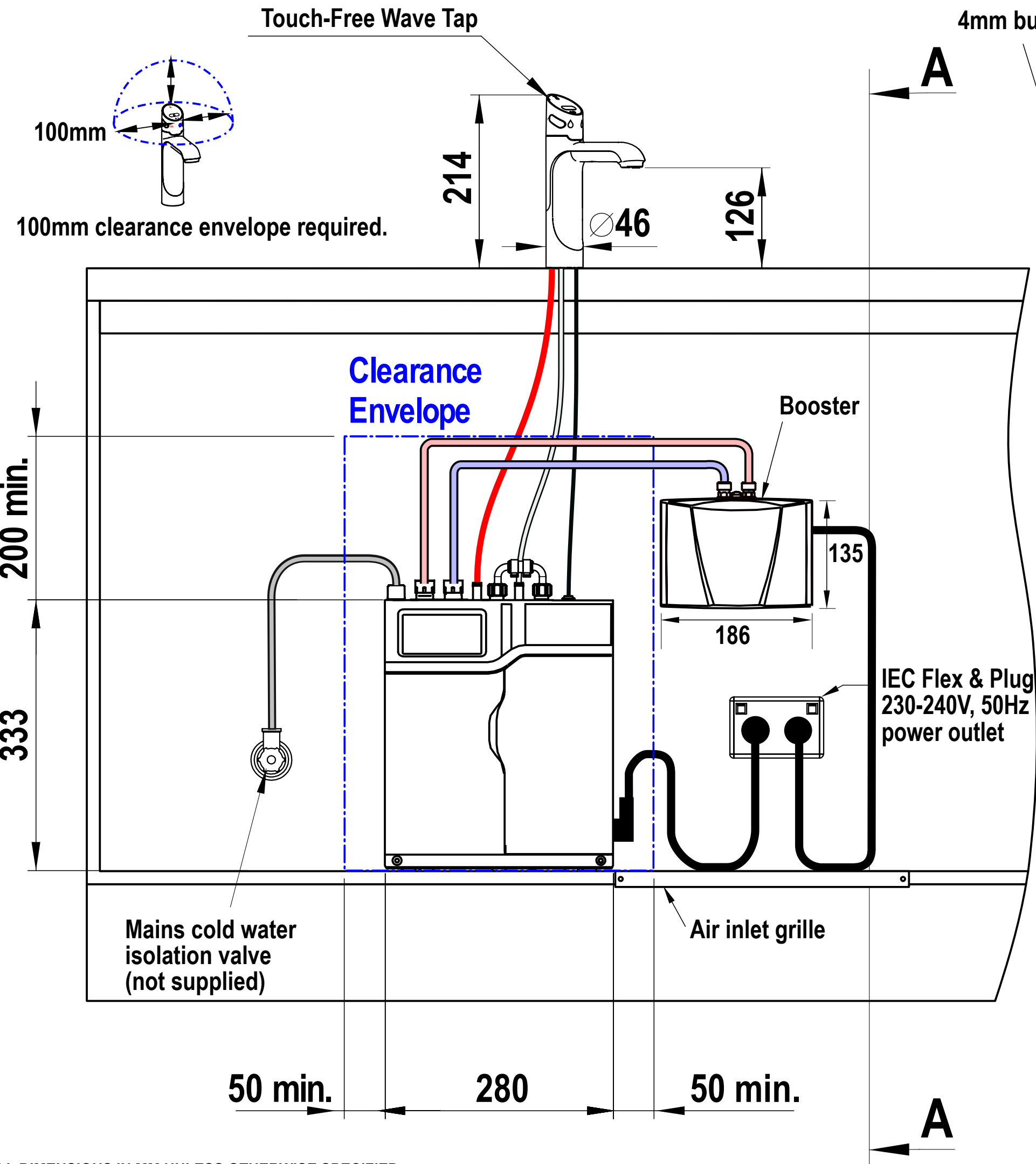
Touch-Free Wave Tap
with 100mm extension & Font



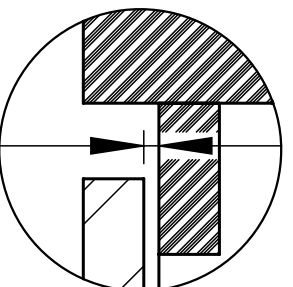
Touch-Free Wave Tap



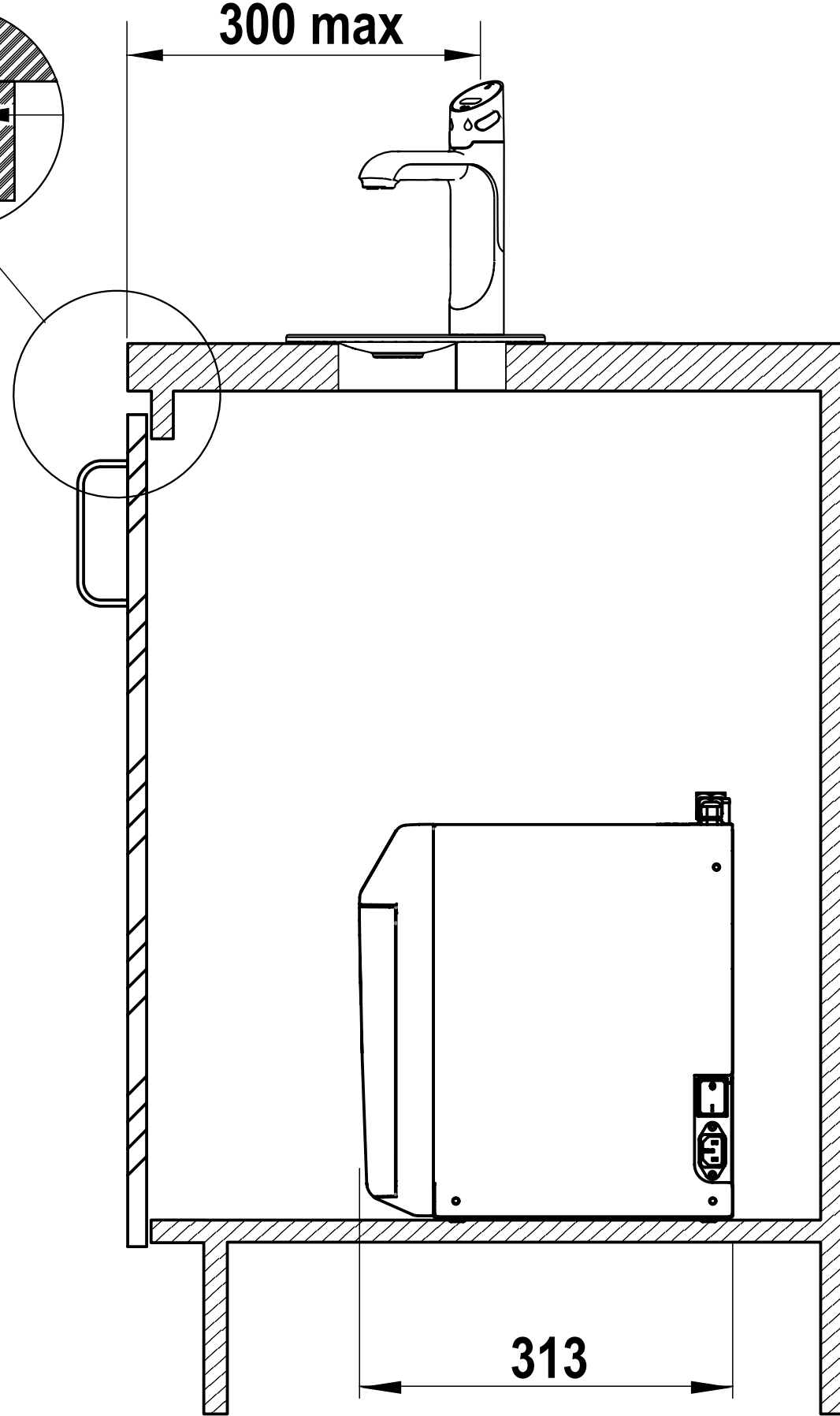
100mm clearance envelope required.



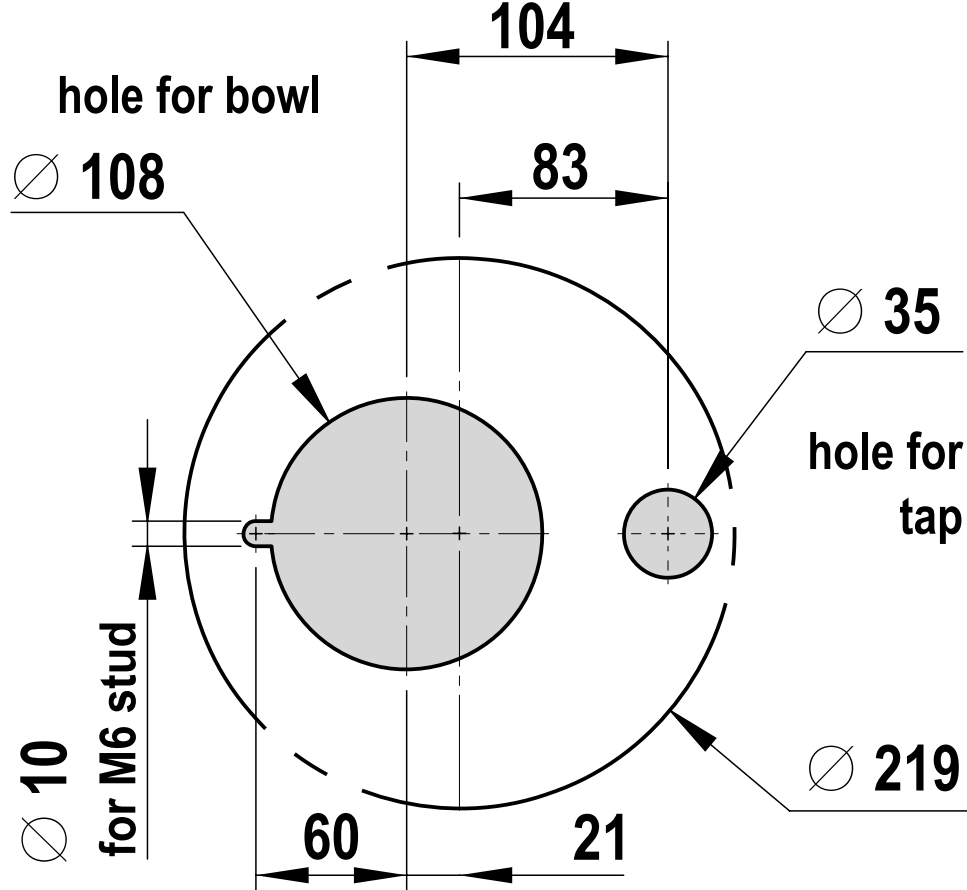
4mm buffer pad air space



300 max



Cutting detail



HydroTap B240
with Touch-Free Wave Tap