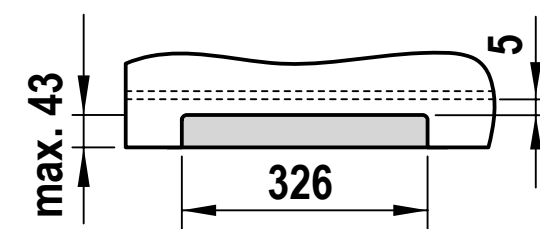
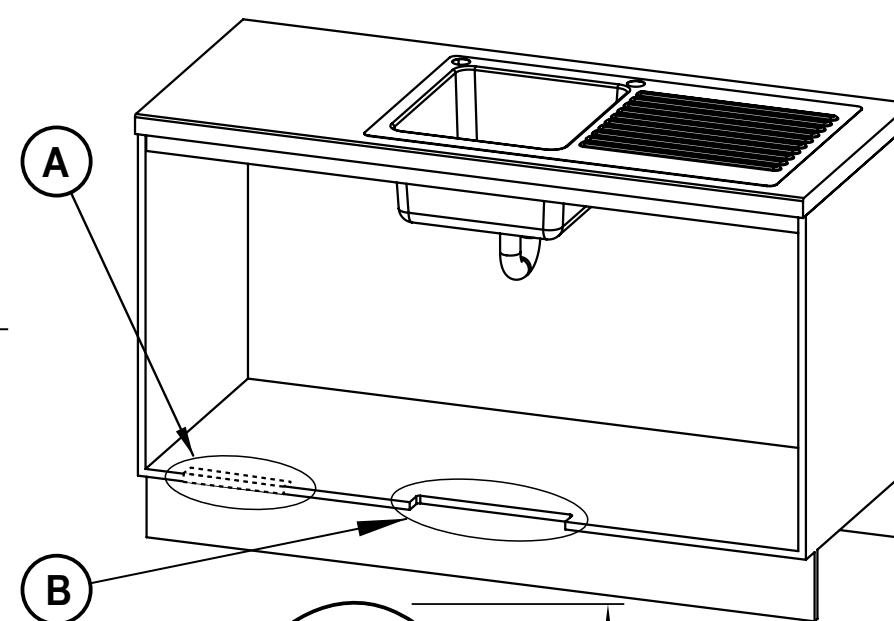
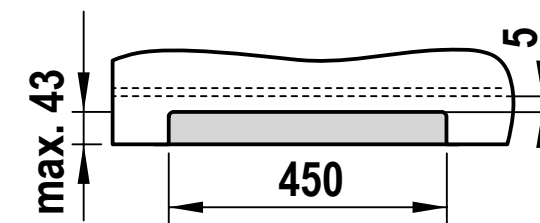


Vent tray ventilation option (kit no. 93540)

Detail A. Air inlet grille
Cut-out in cabinet floor



Detail B. Vent Tray air outlet
Cut-out in cabinet floor

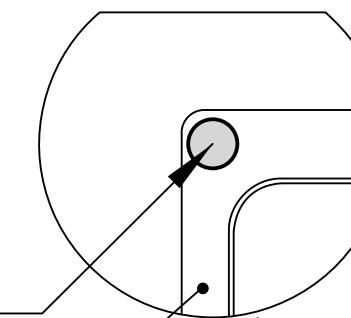


Tap Positioning

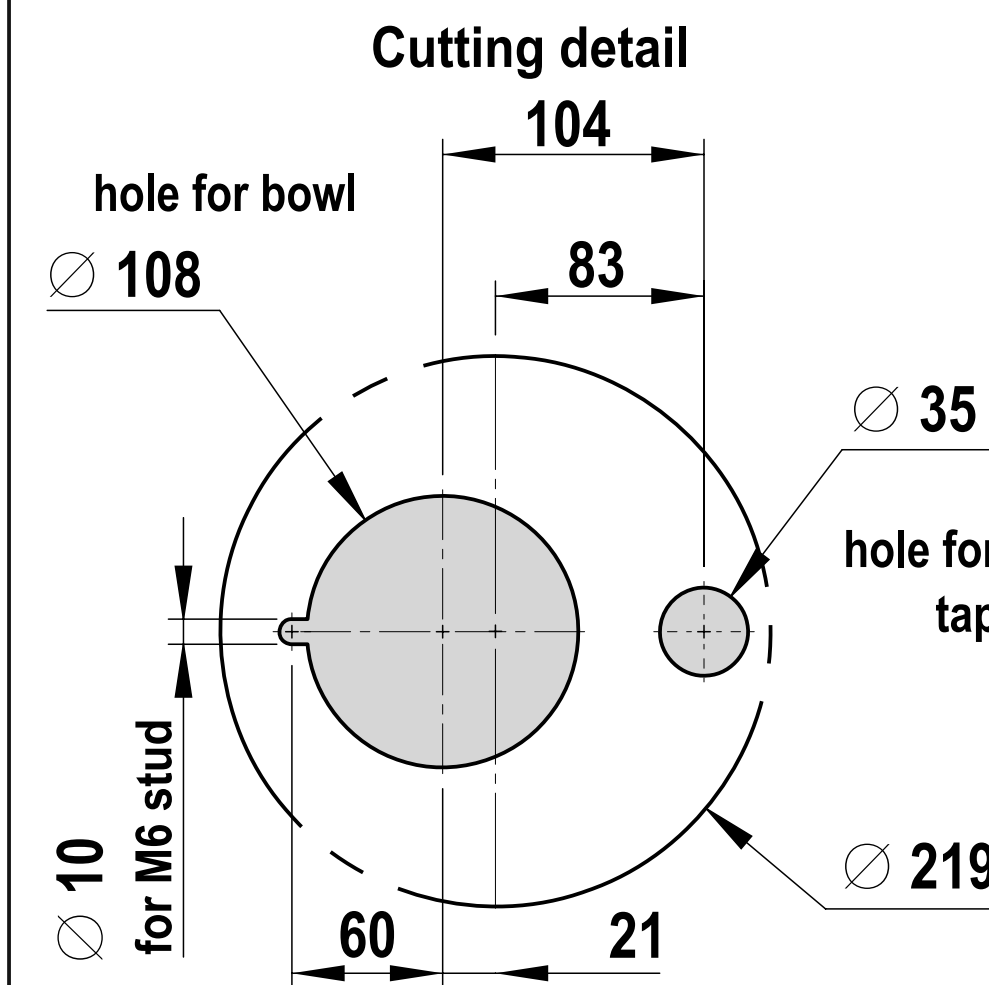
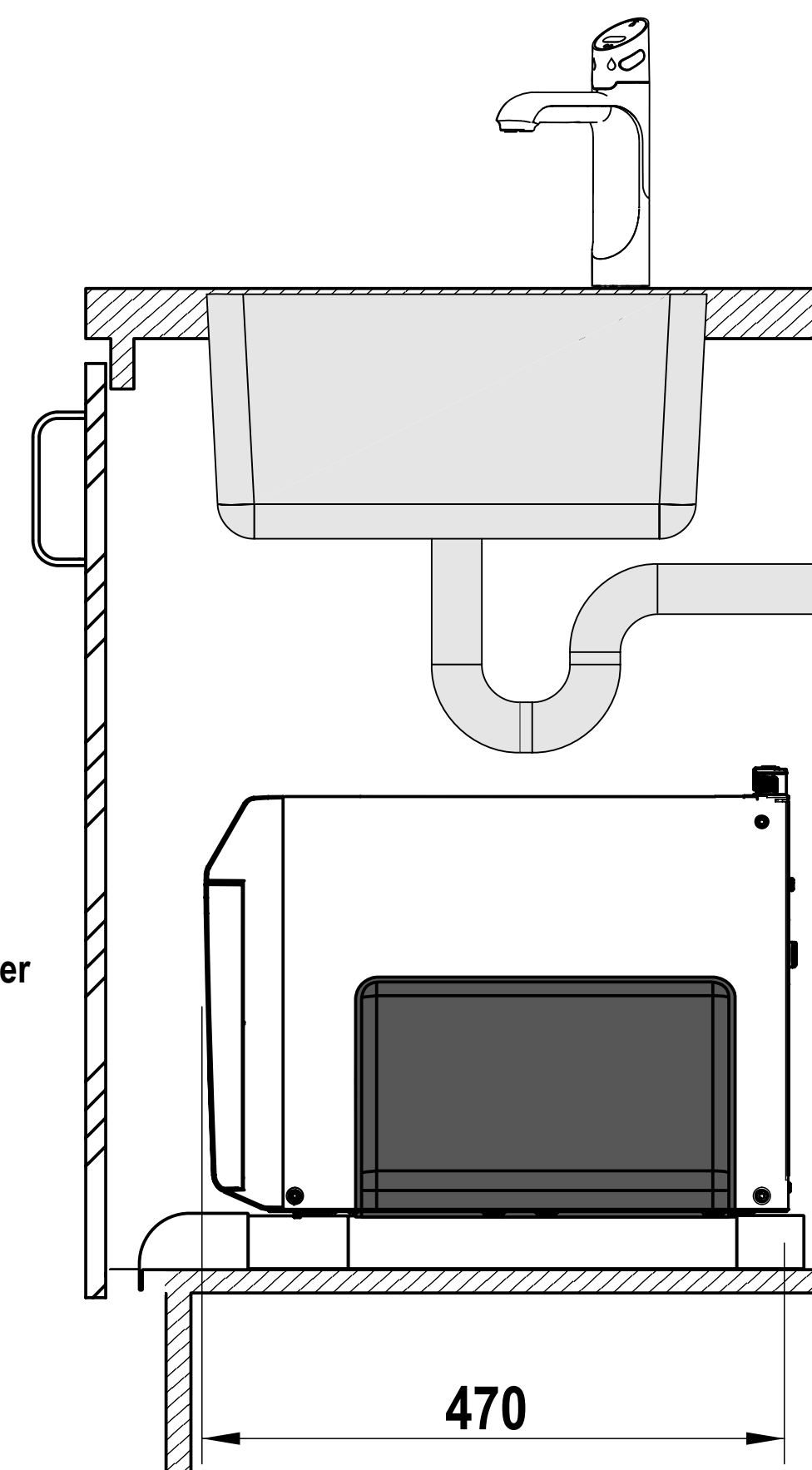
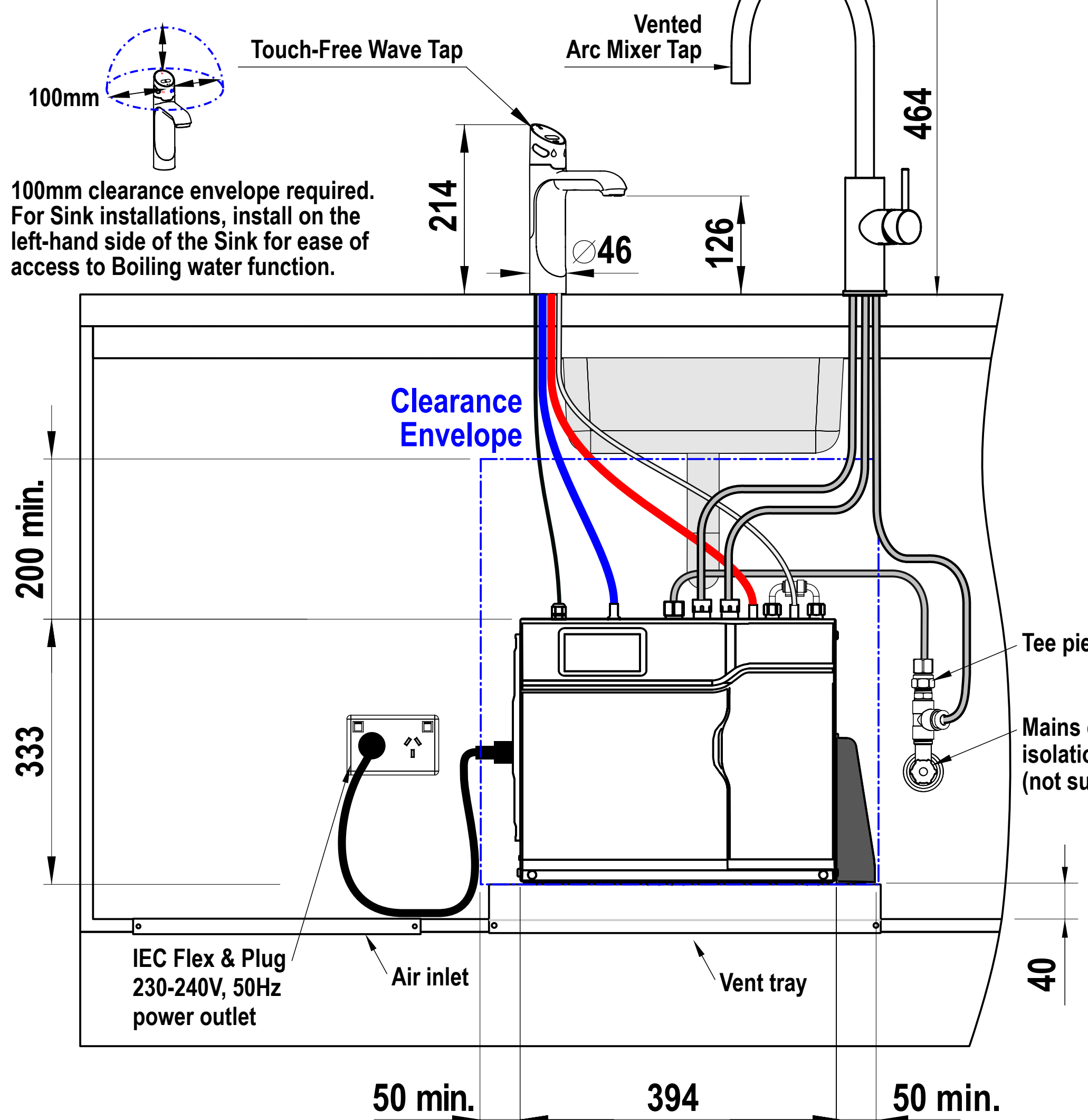
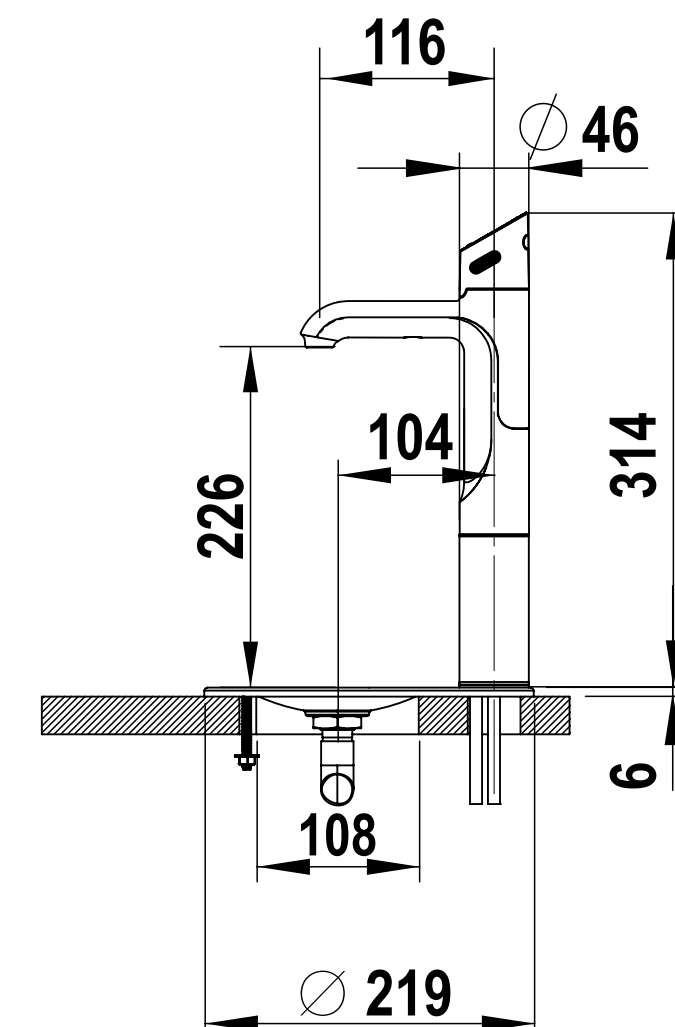
Position the Tap to dispense into the sink, allowing clearance for a cup or teapot. Alternatively, mount tap on a Font (available as an accessory).

Ø35mm hole for Classic Tap

Sink shown only



Touch-Free Wave Tap with 100mm extension & Font



HydroTap
BCH160/125, 160/175

Touch-Free Wave Tap with Arc Mixer Tap (V)