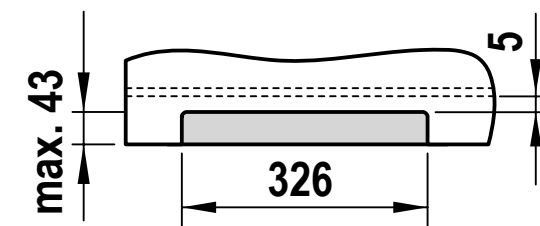
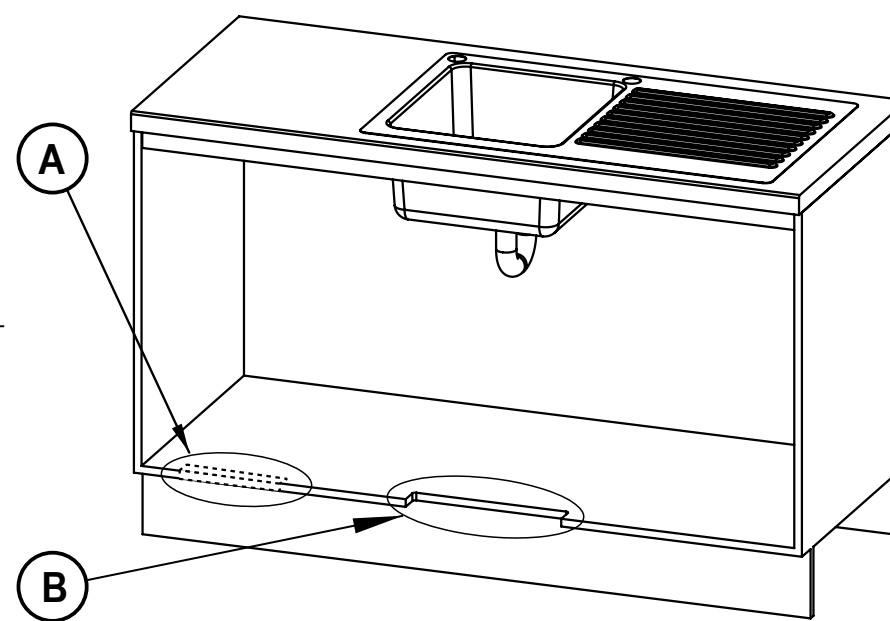
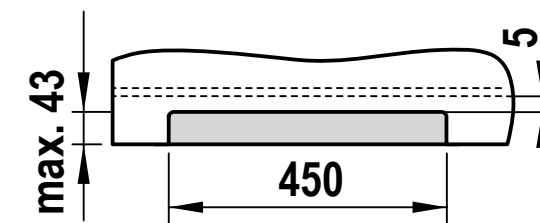


## Vent tray ventilation option (kit no. 93540)

Detail A. Air inlet grille  
Cut-out in cabinet floor



Detail B. Vent Tray air outlet  
Cut-out in cabinet floor

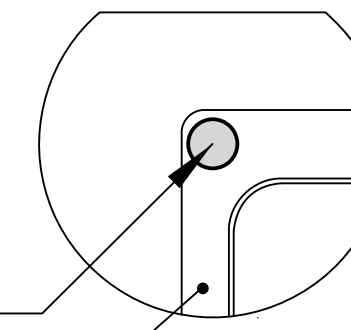


## Tap Positioning

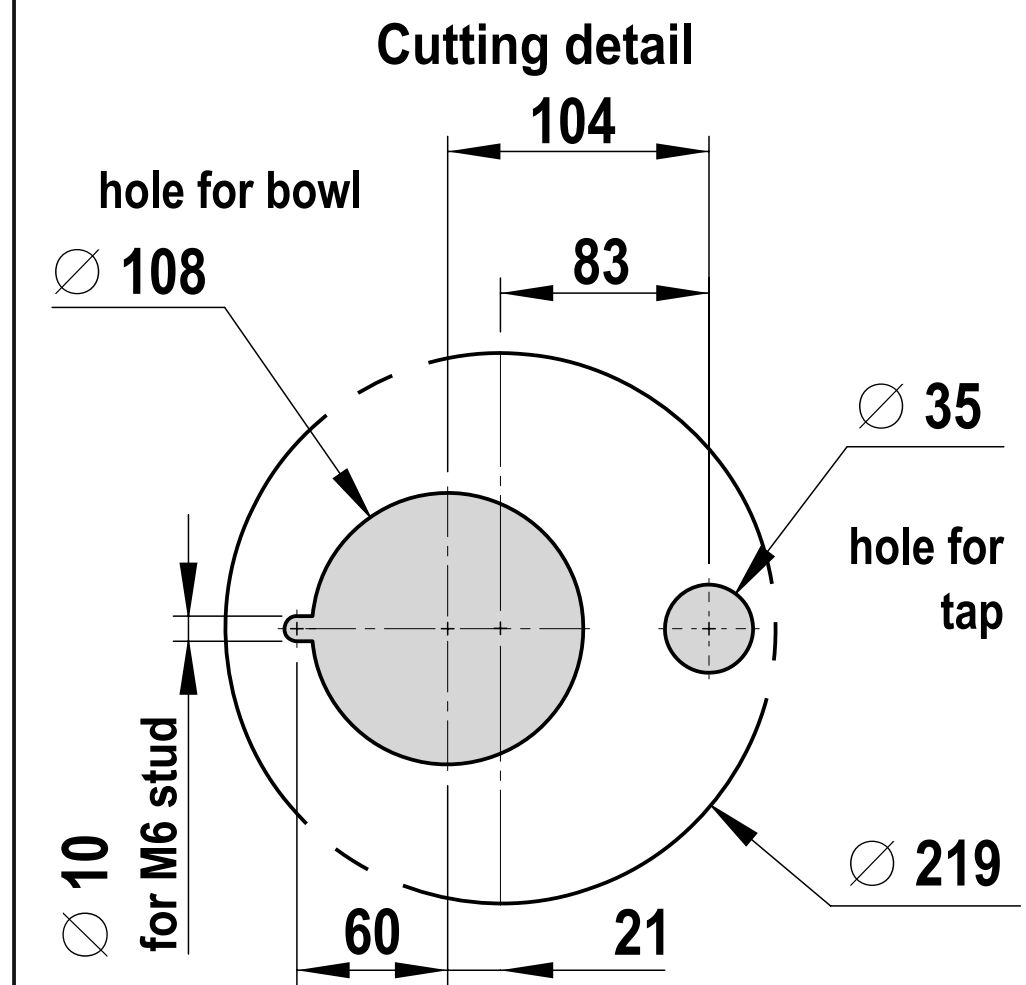
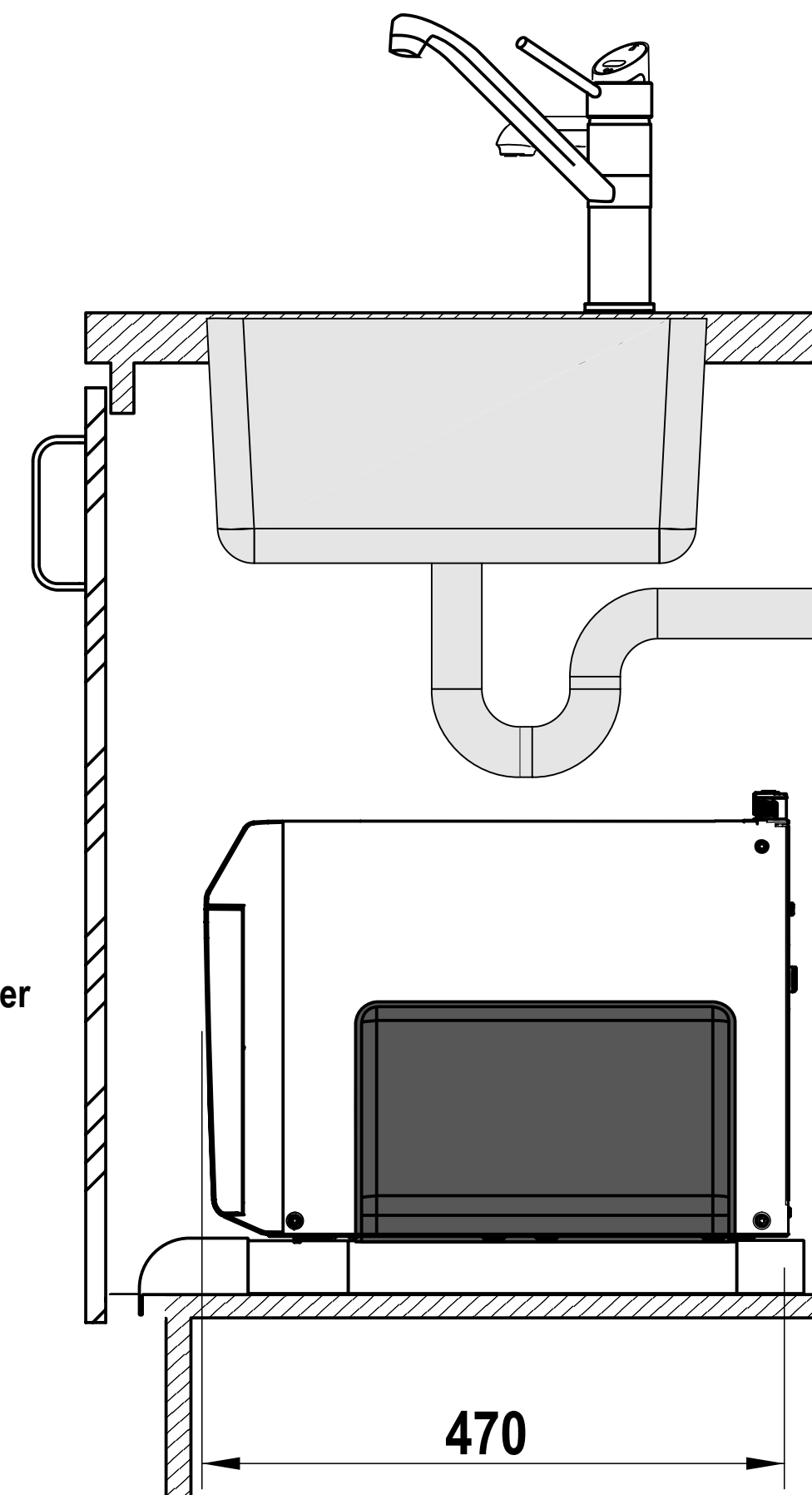
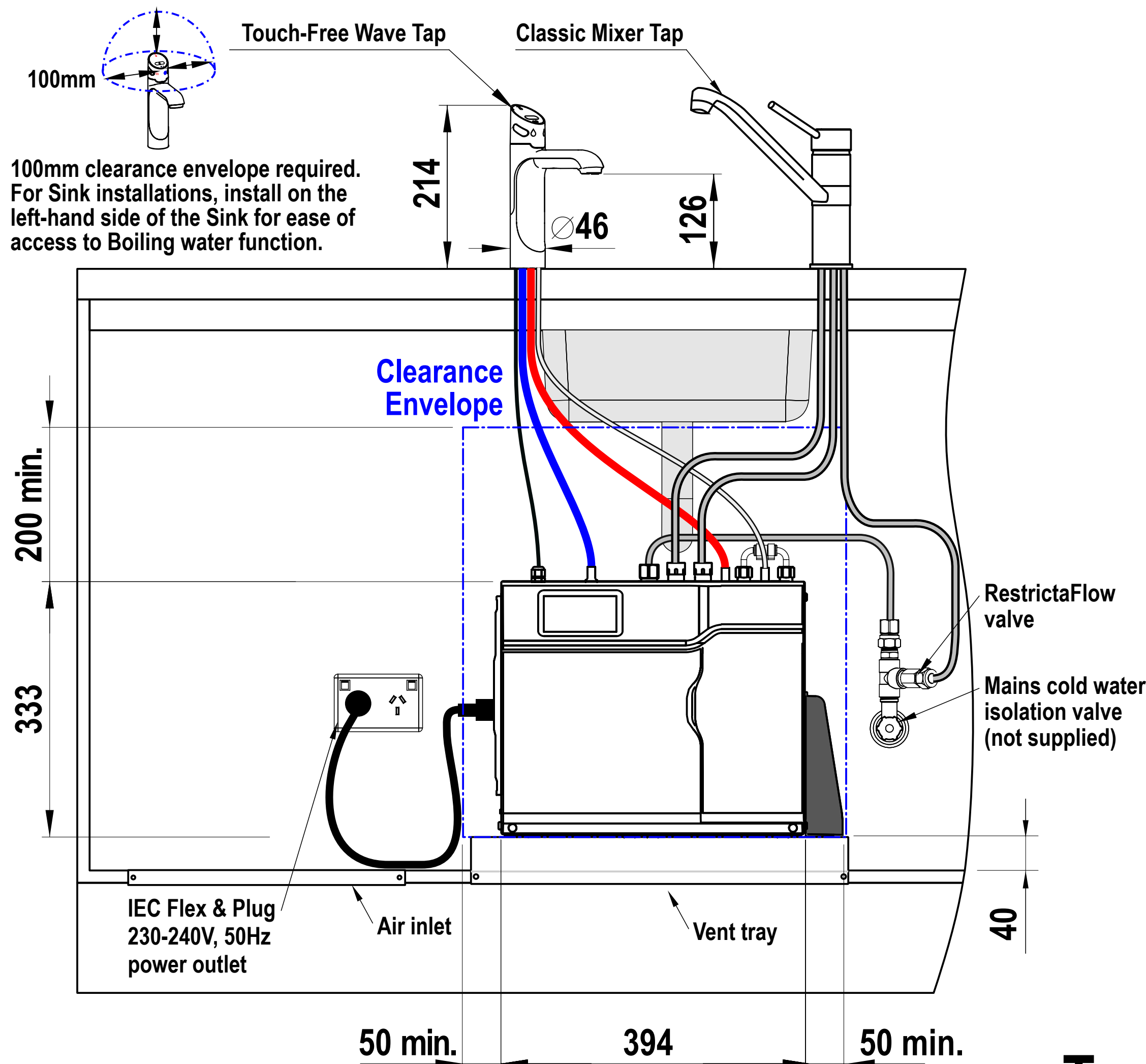
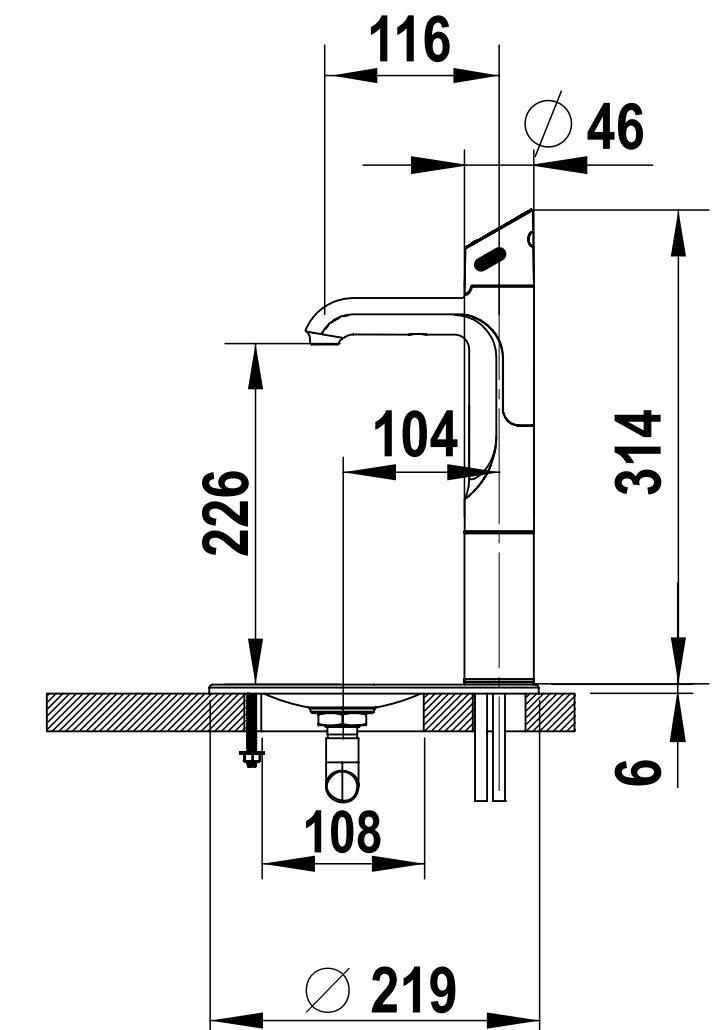
Position the Tap to dispense into the sink, allowing clearance for a cup or teapot. Alternatively, mount tap on a Font (available as an accessory).

Ø35mm hole for  
Classic Tap

Sink shown only



## Touch-Free Wave Tap with 100mm extension & Font



**HydroTap**  
**BCH160/125, 160/175**

**Touch-Free Wave Tap with Classic Mixer Tap**