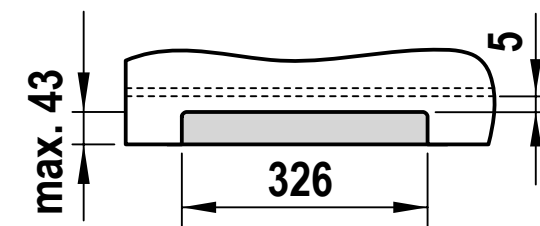
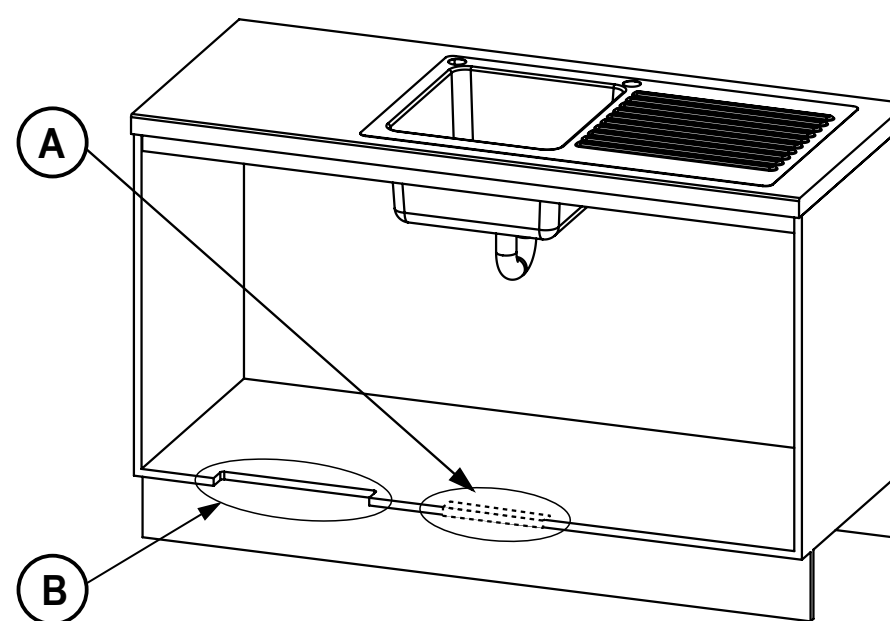
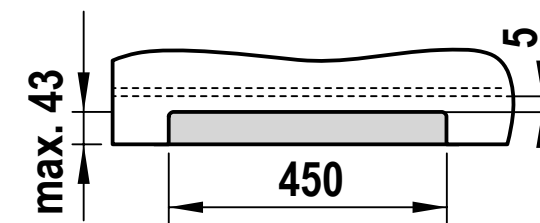


Vent tray ventilation option (kit no. 93541)

Detail A. Air inlet grille
Cut-out in cabinet floor

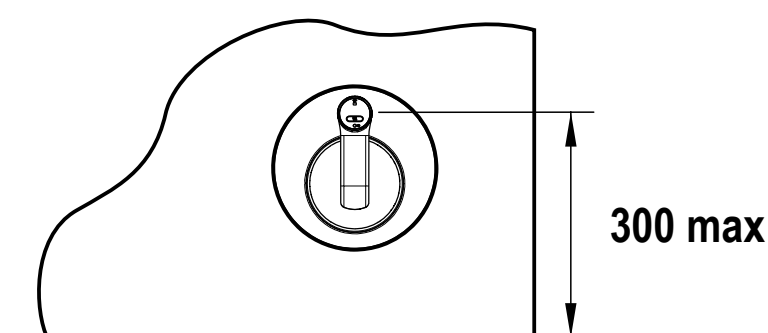


Detail B. Vent Tray air outlet
Cut-out in cabinet floor

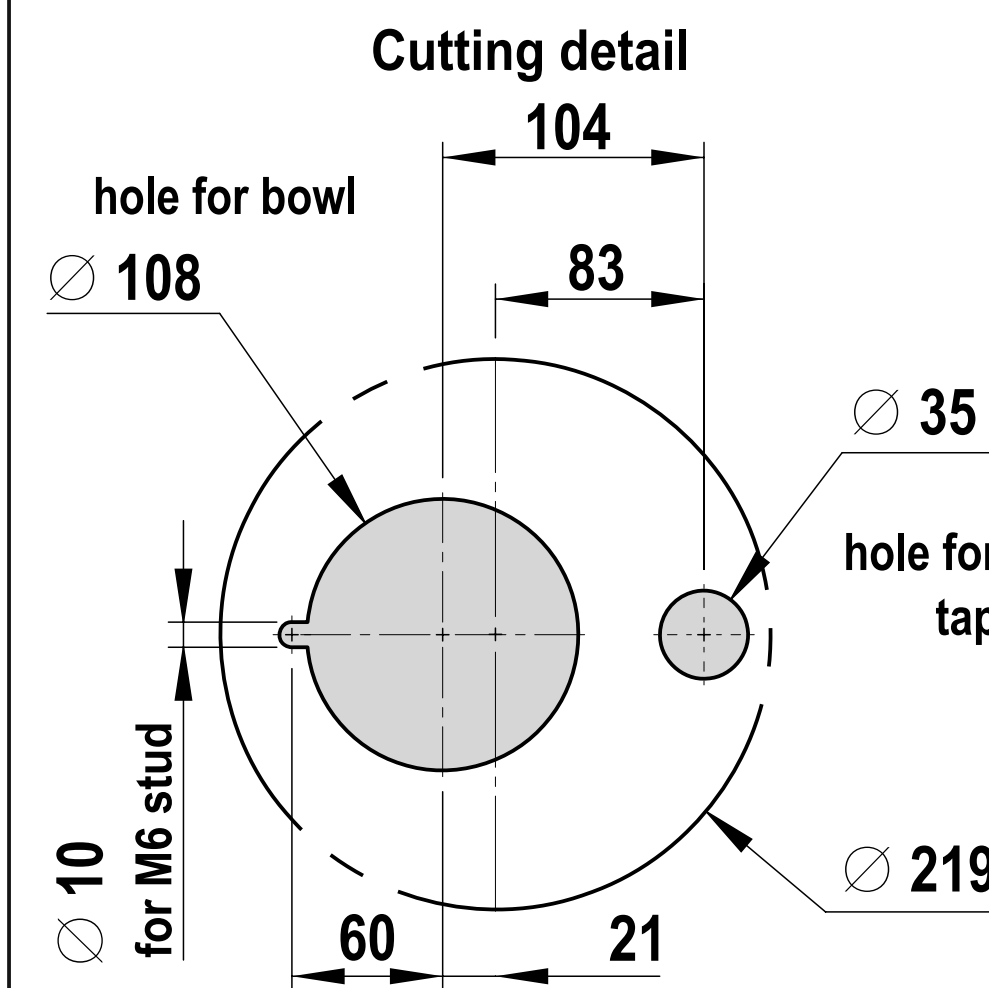
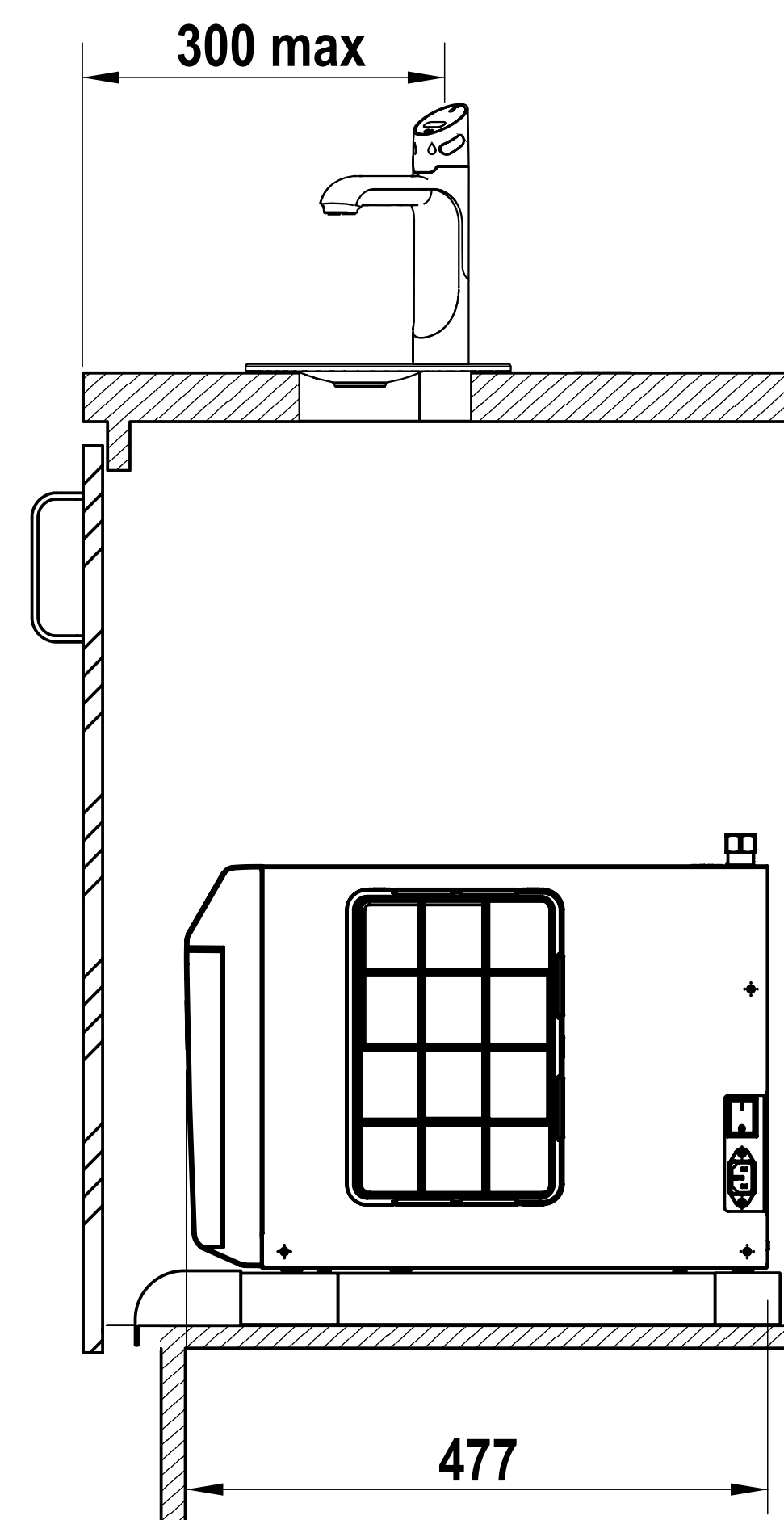
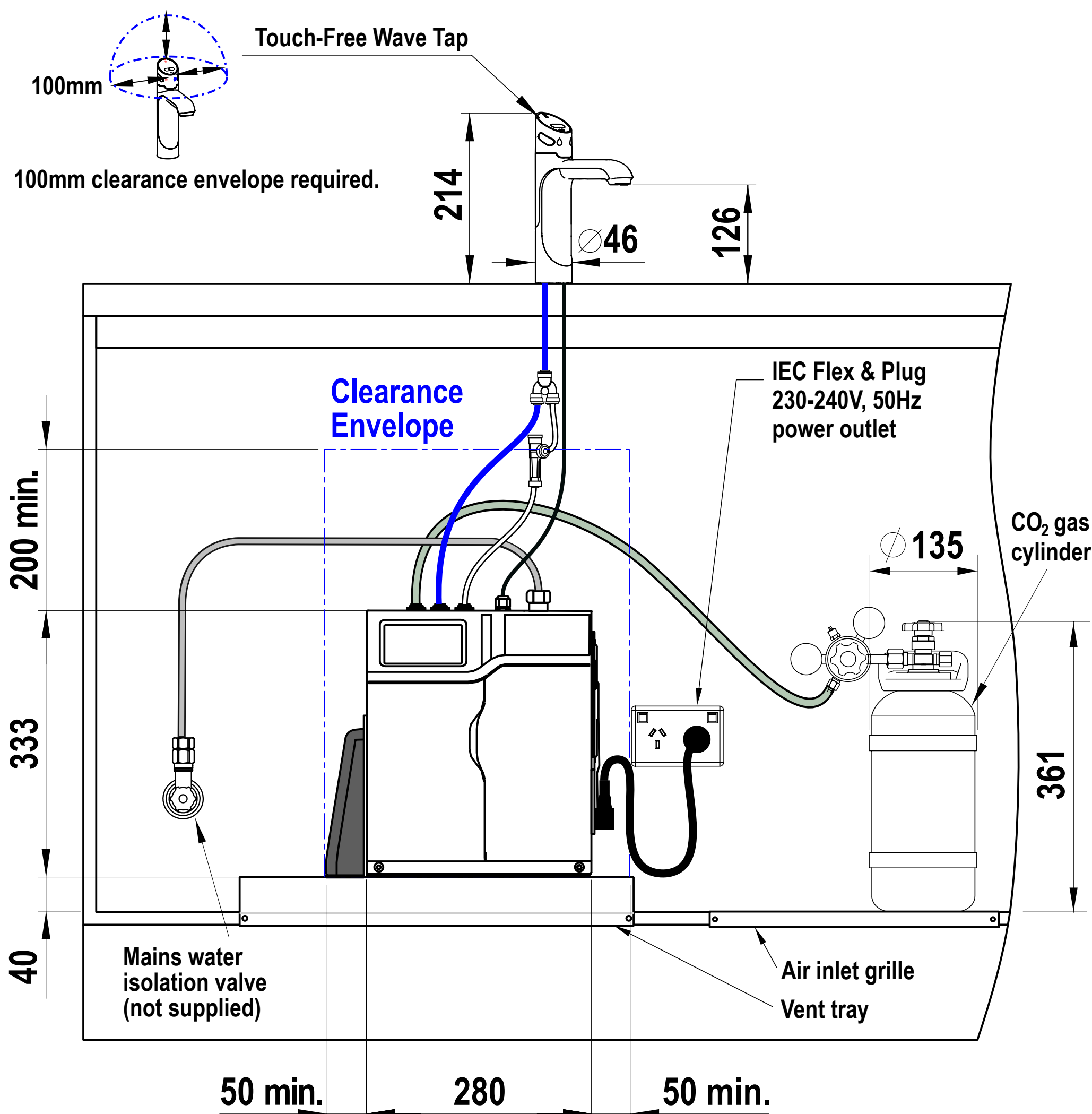
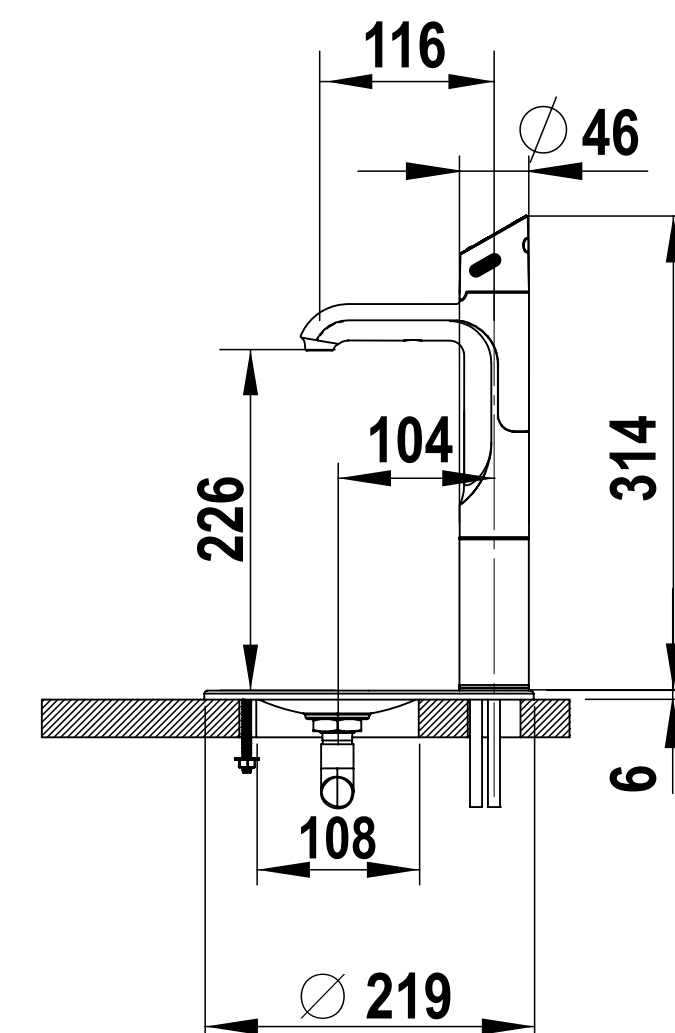


Tap Positioning

Install tap within 300mm of the benchtop edge to meet DDA accessibility requirements. Font installation is preferred.



Touch-Free Wave Tap with 100mm extension & Font



HydroTap CS175 with Touch-Free Wave Tap